

BRIGHT IDEAS

Insights & opportunities from Mizzou Research

Vol. 8, No. 10 — May 2026

[View grants and contracts awarded in March.](#)

MIZZOU INNOVATES

A new wave of ideas go to market

In 2025, Mizzou inventions were patented, licensed by industry and incorporated into commercial products and startup companies. In fact, in April Regeneron Pharmaceuticals announced that the FDA approved Otarmeni™, the first gene therapy for patients with genetic hearing loss delivered using patented technology from Mizzou. [See other innovations that reached milestones.](#)

New Required TRAININGS

Accelerating IRB approvals

[Starting May 18, one-time trainings will be required](#) for new, non-student principal investigators (PIs) and anyone who submits an Institutional Review Board (IRB) clinical study application on behalf of a PI. The aim is to decrease the number of returned submissions.

Science the Mizzou way

More than 400 students across campus presented their research during Show Me Research Week. [Those who received the best critiques from alumni, faculty and graduate student judges were honored at an awards ceremony on April 23.](#)



Save research dollars

How a laboratory team manages waste has a direct and measurable impact on research costs, efficiency and long-term sustainability. [Environmental Health & Safety can help you reduce hazardous waste, avoid unnecessary costs and make smarter purchasing decisions.](#)



Nuclear energy insight

[Mr. William D. Magwood IV, Nuclear Energy Agency \(NEA\) director general, will present at 10 a.m. on May 13](#) Monsanto Auditorium, Bond Life Sciences Center. The NEA fosters international cooperation and expertise in nuclear energy. [RSVP by May 11.](#)

Professional development

Preparing for promotion and tenure

Join Hansa Magee, director of research analytics, and Brenda Cook, administrative consultant in the Office of the Provost, on Zoom from **noon-1 p.m. on May 8** for tips on [reporting grant activity](#) for promotion and tenure. [Register.](#)

Summer grant-writing workshop

You are invited to a three-day, intensive [grant bootcamp and writing retreat](#) from **9 a.m.- 3 p.m. on May 18-20** at Bond Life Sciences Center. Bring a funding request, and Professional Development will walk you through the creation of a responsive proposal. [Register by May 12.](#)

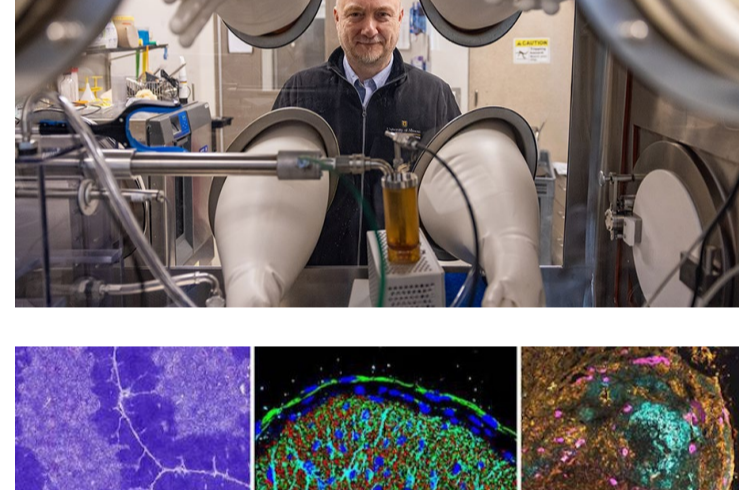
Researcher writing retreats

Take advantage of two writing retreats. Professional Development will be on hand for individual consultations from **9 a.m.-3 p.m. on May 19 and June 8** (Room 171, Bond LSC). Drop in as needed. [Register to receive a reminder.](#)

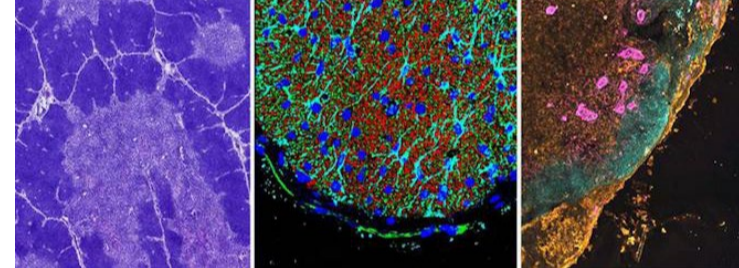
AI-Ready Missouri Summit

Mizzou's AI Research Interest Group invites you to [a statewide summit](#) from **9 a.m.-12 p.m. on May 29** for stakeholders in government, industry and higher education. The event focuses on helping Missouri succeed in an AI-driven economy. [Register for the in-person event or virtual option.](#)

Core knowledge



Mizzou's advanced technology core facilities bring shared access to instruments that help researchers from multiple disciplines quickly move ideas from concept to impact. [Step inside five cores and see example of how they support the work of colleagues across campus.](#)



From the optic nerve to ovarian tumors, this year's **Advanced Light Microscopy Core image contest** displayed the intricacies and beauty of biology in crisp detail. While visually striking, the winning images all tell a story. [Read about the 2026 winners and the scientific questions their images helped answer.](#)



Mizzou is home to state-of-the-art instruments that rival those available at national laboratories. [Download this flyer](#) to check out the **Electron Microscopy Core's capabilities**, share it with your outside collaborators, and, as always, [contact EMC staff](#) to brainstorm about your next project.

Resources and reminders



Partnering with the [Veterinary Medical Diagnostic Laboratory](#) (VMDL) can strengthen research in animal health, zoonotic disease and One Health. [Contact Director Shuping Zhang](#) early in the grant proposal process to help shape your study design and testing strategies.



Mizzou offers numerous **summer programs and camps for youth** of all ages. [Check out options from colleges, schools and departments](#) on The Connector website. [Please email us](#) if you don't see your camp listed or for more information on how to start a new camp.

Take advantage of NSF fellowship resources

[Eight Mizzou students and alumni were selected](#) for the prestigious National Science Foundation Graduate Research Fellowship (NSF GRF) Program with support from faculty and staff mentors and numerous campus offices. Encourage students to apply for the fall application cycle with help from:

- [Office of Global and National Fellowships NSF GRF webpage](#)
- [Online summer bootcamp](#)

Clinical trial resource unveiled

The School of Medicine and MU Health Care launched [a tool that makes it easier for users to find information on clinical trials](#). This resource complements the [broader database of active Mizzou research studies](#) that the Division of Research maintains.

From Mizzou Libraries:

- If you're preparing a grant, searching for the right dataset or designing a data collection process, [reach out to the Health Sciences Library for specialized assistance.](#)
- [View the 2026 Visual Art and Design Showcase Online Exhibit.](#)

Mark your calendar



The Thompson Center for Autism and Neurodevelopment is celebrating its new \$54.8 million facility with a proclamation event at **4:30 p.m. on May 7** and an open house from **9 a.m.-12:30 p.m. on May 8.**



Join Associate Professor Michael Greenleaf for a [webinar on NSF's Major Research Instrumentation funding](#) at **1 p.m. on May 13.** The internal deadline for this limited submission is **8 a.m. on July 31.** [Register.](#)

Deadlines

Institutional Biosafety Committee
May 4: [Submit](#) research protocols for June 4 meeting.
June 2: [Submit](#) research protocols for July 2 meeting.

Limited submissions funding
May 11: [G. Harold and Leila Y. Mathers Foundation Grants](#)
May 25: [NSF Integrated Data Systems and Services](#)
June 1: [NEA Grants for Arts Projects](#)

Institutional Review Board (IRB)
May 25: [Submit](#) human subjects research applications, amendments and annual updates for June 10 full board review.

Events

Faculty Excellence Week
May 4 (11 a.m.-1 p.m.) – Enjoy food, music and giveaways at the [faculty appreciation luncheon.](#)

Extra Credit film series
May 11 (6 p.m.) – Watch "Romeo + Juliet" and researcher panel discussion.

NextGen Precision Health Discovery Series
May 12 (noon) – This month's topic is "[The Ecology and Evolution of Learning Across Species.](#)"

Grant Connections meeting
May 27 (10 a.m.) – We'll cover the Single Audit of federal awards, NSF HERD Survey and a promotion and tenure report ([Zoom link](#)).

In case you missed it



Researcher W. David Arnold and collaborators are [on the forefront of a game-changing treatment to improve muscle strength and functioning](#) for patients with Charcot-Marie-Tooth disease. Clinical trials also are testing the drug's effectiveness in patients with myasthenia gravis and spinal muscular atrophy type 3.



Starting **May 8**, NIH will require Common Forms and a new Data Management and Sharing Plan format for applications. NIH also has changed continuous submission and late submission that take effect May 25. [Learn more on our federal updates website.](#)



Research, Innovation & Impact
University of Missouri



Bright Ideas
Division of Research, Innovation and Impact

310 Jesse Hall, Columbia, MO 65211

573-882-9500

[research.missouri.edu](#)