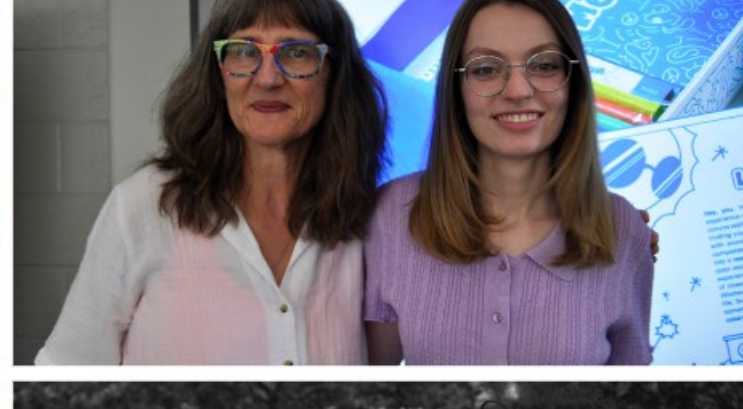
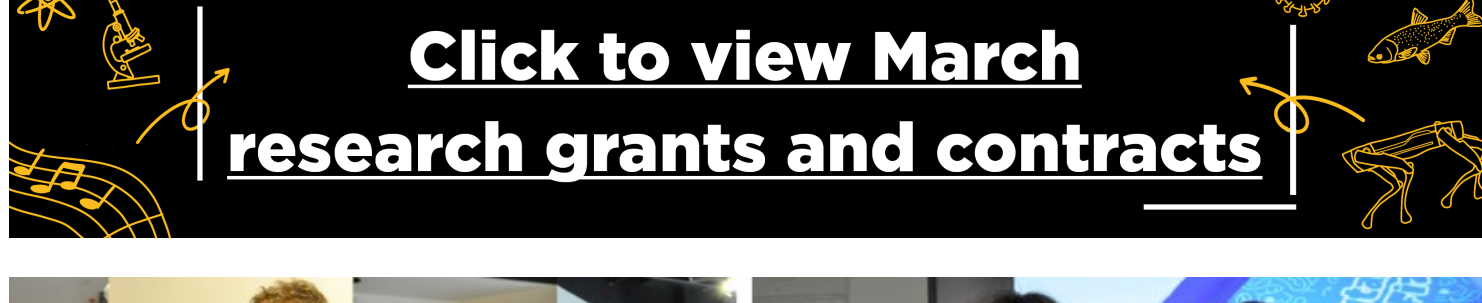




Research, Innovation & Impact

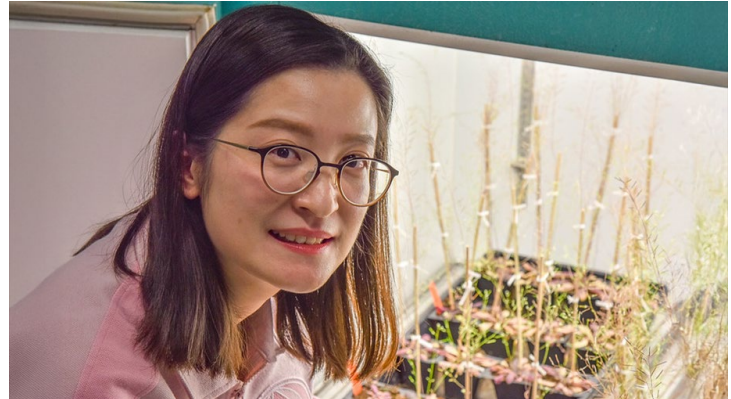
University of Missouri

May 2025



Fostering creative expression and scholarship

Faculty share advice on successfully mentoring students in the arts. Hear from them and award-winning protégés who excelled in Mizzou's 10th annual Undergraduate Visual Art and Design Showcase.



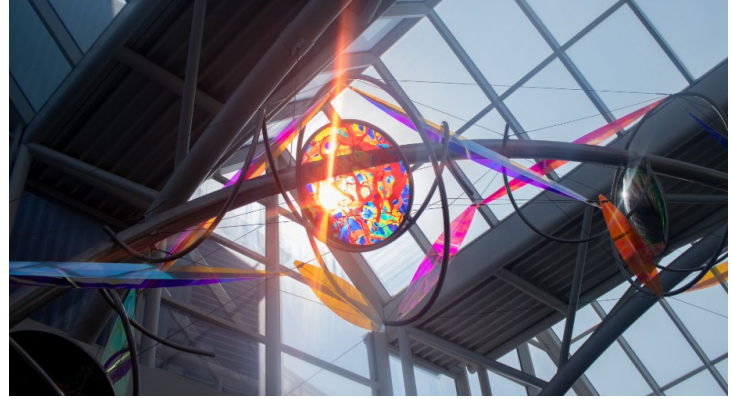
Super-resolution plants

Mengran Yang, a postdoctoral fellow in Gary Stacey's lab at Bond Life Sciences Center, genetically engineers model plants that help U.S. Department of Energy collaborators develop a better way to image hard-to-see cellular structures in plants.



New federal requirement

The U.S. Department of Energy now requires investigators to complete annual research security training before submitting grant applications. Other federal agencies are expected to follow suit, so it's a good idea to do your hour-long training now.



Art contest under way

Eight lucky investigators will have their art featured in an update to the "Joy of Discovery" sculpture in Bond LSC. Researchers from a wide variety of departments submitted images in April, and now the judging begins. View the images and learn more.



Student research shines

Nearly 500 students and postdocs presented their research or art projects during Show Me Research Week. Thank you to the faculty mentors who encouraged the next generation of investigators. Meet the winners, see photos and read stories about individual projects.

Research opportunities and resources



Learn about Keck funding

The W.M. Keck Foundation funds medical, biological, physical science and engineering research, including the development of new technologies. [Submit research summary and CV](#) through InfoReady by May 27. Get details at 4 p.m. **May 6** ([meeting Zoom link](#)).



New mentorship hub

Mizzou's new ForagerOne platform connects faculty mentors with students based on their interests and skills. In a few clicks, you can activate your pre-populated profile. Turn on the "accepting students" button to receive student inquiries about research opportunities.



Streamline your lab

Whether you're a new investigator or a tenured researcher, cleaning out your lab space can be a big undertaking. Environmental Health and Safety offers tools and resources to assist with lab clean-outs, transitions and departures.

Professional development

The Division of Research Professional Development team is here to support your research. Schedule a **one-on-one consultation** to explore new funding options, reframe proposal language and get other assistance to help you navigate an evolving federal landscape. [Request support](#).

May 8 (9 a.m.-3 p.m., Room 171, Bond Life Sciences Center) — Professional Development team members will be available for individual consultations and in-the-moment feedback during this in-person **writing retreat** for researchers. [Register to receive a calendar invitation](#).

May 30 (noon) — This virtual session will offer tips for investigators interested in saving time and avoiding headaches when [preparing sponsored projects/reporting grant activity for promotion and tenure](#) review, myVITA updates, CV compilations and grant proposal submissions. [Register](#)

June 2-5 (9 a.m.-2 p.m.) — Join us for a four-day, intensive [grant writing retreat and boot camp](#). Bring a funding request, and the Division of Research professional development team will help you develop a responsive proposal. [Register](#)

June 5-6 (8 a.m.-4 p.m.) — The in-person [clinical research study coordinator bootcamp](#) provides basic training for research coordinators and staff. [Register](#)

Team science

Investigators across campus interested in collaborating on projects, funding and training opportunities in **implementation science** are invited to join an informal session from 1-4 p.m. **May 20** in Stotler Lounge, Memorial Union North. Drop in and out as needed. [Register and join email list](#).

Important dates

Deadlines

BioNexusKC health outcomes grants

May 14: Submit letter of intent by 5 p.m. for research projects in health equity, food as medicine or mental/behavioral health.

Institutional Biosafety Committee

May 19: Submit research protocols for June 19 meeting.

Institutional Review Board (IRB)

May 25: [Submit](#) human subjects research applications, amendments and annual updates for June 11 full board review.

BioNexus KC Science2Art

June 7: [Submit](#) scientific images for BioNexus KC's annual auction to support regional education programs.

Limited submissions funding

Sept. 1: [NSF Strengthening the Cyberinfrastructure Professionals Ecosystem \(SCIEP\)](#)

Events

NPR's Science Friday Live

May 10 (6 p.m.) — Conversations with Mizzou researchers, demonstrations and audience Q&A

HRPP/IRB research compliance seminar

May 12 (2 p.m.) - Regulatory definitions and requirements for biospecimens used in human subjects research ([Request Zoom link](#))

Extra Credit film series

May 12 (6 p.m.) — "The Graduate" and researcher panel discussion

NextGen Precision Health Discovery Series

May 20 (noon) — [The mind-body nexus in osteopathic medicine](#)

Grant Connections meeting

May 21 (10 a.m.) — Funding tips and tricks for nonfederal agencies, including the American Heart Association ([Zoom link](#))

Things to know



New era for diagnostics

The College of Veterinary Medicine celebrated the grand opening of phase I and groundbreaking of phase II for the Dr. Dan Brown Building, home to the Veterinary Medical Diagnostics Laboratory. Go behind the scenes in this photo tour.



MURR momentum

The MU Research Reactor (MURR) [opened a three-story, \\$20 million addition](#) and signed an agreement for the [first phase of a new state-of-the-art reactor](#) to expand lifesaving cancer treatments and advance nuclear science.

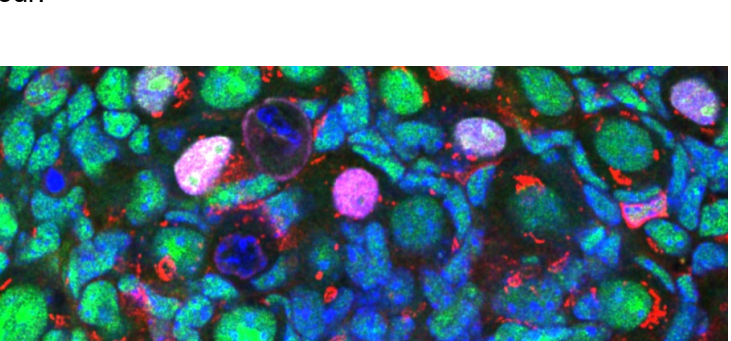


Image contest winners

The Advanced Light Microscopy Core holds an annual image contest to showcase the work of core users. Check out this year's entries and see who won the People's Choice, Expert's Choice and Jurkevich Technical awards.



Meat science training

Mizzou broke ground on the Michael L. Parson Meat Science Education and Training Laboratory, which will support one of Missouri's largest industries by offering hands-on learning, research and real-world opportunities.

Division of Research, Innovation & Impact
310 Jesse Hall, Columbia, MO 65211
573-882-9500

Quick Links
[Research Support](#)
[Innovation & Entrepreneurship](#)
[Industry Partnerships](#)
[Cores & Centers](#)
[Departments](#)

