



# Research, Innovation & Impact

University of Missouri

March 2023



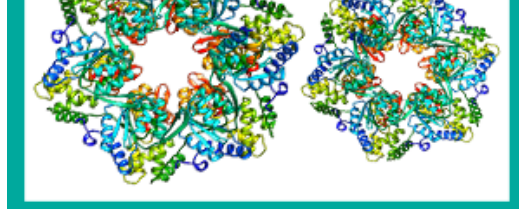
## How art heals

Katina Bitsicas, assistant professor in the School of Visual Studies, researches how creating art through digital storytelling can help the recently bereaved cope with their grief. She also shares her experience as an Arts and Humanities Fellow.



## New research heights

In fiscal year 2022, MU set a record for research expenditures of \$432 million, marking the 10th consecutive year of growth for Mizzou research.



## Competition loading

IT Research Support Solutions helped Jianlin Cheng, professor of electrical engineering and computer science, and his team rank first in an international protein prediction competition.



## Show Me Research Week, April 17-21

This campus event includes oral and poster presentations, creative works and speakers. Students and postdocs from any degree program should [register to present](#) their research by March 22. Faculty and staff, graduate students and postdocs are encouraged to [serve as judges](#).



## New National Science Foundation requirement

NSF grant proposals with off-campus research must include a plan for creating and maintaining safe and inclusive work environments. This and other hot topics for the grants community will be posted on the [Sponsored Programs Administration news webpage](#).

## Mizzou Research in the News

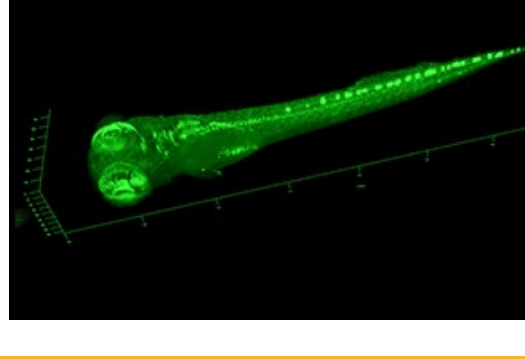


Our [news release](#) about Associate Professor Haojing Yan's research using NASA's James Webb Space Telescope appeared in 670 stories in the media, including [Yahoo News](#).

## We can tell your story

Have you recently published research or received a grant? The MU News Bureau can share these accomplishments with the general public through various media channels. Our writers will produce content with you to garner coverage that could generate more interest in your research and create new connections for future research. Contact us at 573-882-6211 or [munebureau@missouri.edu](mailto:munebureau@missouri.edu).

## Core Knowledge



## Magnifying unseen worlds

For more than 30 years, the Advanced Light Microscopy Core facility has been meeting the needs of MU researchers requiring visualization and documentation of objects, materials and structures undetectable by the naked eye.

## Professional Development

### From Mizzou:

Virtual sessions will cover how these federal agencies are organized, the role of the program officer, how to identify funding opportunities and what it takes to create a successful grant application.

- Introduction to National Institutes of Health Funding, March 16, 12-1 p.m. ([Register](#))
- Introduction to National Science Foundation Funding, March 22, 12-1 p.m. ([Register](#))

[Check out recordings](#) of last month's professional development sessions:

- 2021 NIH Data Management and Sharing Policy, Feb. 3
- Translational Advances in Neurodegenerative Diseases, Feb. 15
- Involving Undergraduate Students in Research, Feb. 21

The [NextGen Clinical Trial Investigator Training](#) series includes lectures and panel discussions. Attend virtual sessions from 5-6:30 p.m. on April 5, 12, 19, 26 and May 3. ([Register](#))

Artificial Intelligence and Chatbots (ChatGPC, Claude, Dragonfly), April 18, 11 a.m.-12 p.m. — Virtual session hosted by MU Libraries. ([Register](#))

### External opportunity:

[Nexus Informatics Conference](#), April 20-21, Children's Mercy Research Institute, Kansas City – Incorporates perspectives from industry, academia, medicine, agriculture, technology and biology and provides opportunities for students. ([Register](#))

## Important Dates

### Deadlines

**Research Council Grants**

**March 13:** Applications are due by 5 p.m., notification of awards by May 2. Questions? [Email Internal Funding staff](#).

**Institutional Biosafety Committee (IBC)**

**March 20:** Submit research protocols for April 20 meeting.

**Institutional Review Board (IRB)**

**March 25:** [Submit](#) human subject research applications, amendments and annual updates for April 12 full board review.

**Show Me Research Week**

**March 22:** Student and postdoc [registrations](#) are due for Show Me Research Week forum, April 18-20.

**Limited Submissions Funding**

**March 31:** Letter of intent due for Breast Cancer Alliance [Exceptional Project Grants](#); application due to MU by May 1.

**April 3:** [NSF Partnerships for Innovation](#)

**April 24:** [NIH Autoimmunity Centers of Excellence](#)

### Events

**Columbia Young Scientists Fair and Expo**

**March 11, 1-4:30 p.m.,** Stotler Lounge, Memorial Union North – MU science and technology activities for families

**HRPP/IRB Research Compliance Seminar**

**March 13, 2 p.m.** ([Request Zoom link](#)) – Internal Controls and Sanctions Compliance in International Research

**Extra Credit film series**

**March 20, 6 p.m.,** Ragtag Cinema – Enjoy "Wayne's World" and a panel discussion with MU researchers.

**NextGen Precision Health events**

**March 20, 12-1 p.m.,** Atkins Family Seminar Room or virtual – [The Perivascular Neuro-Immuno-Adipose Axis](#) in Inflammatory Bowel Disease ([Register](#))

**Entrepreneur Quest Competition**

**March 21, 3 p.m.,** Monsanto Auditorium, Bond Life Sciences Center – Watch students pitch their business ideas for \$30,000 in prizes.

## Things to Know

### Around campus

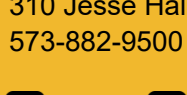
- Colleen Ray and fellow scientists in the Department of Chemistry have [developed a new method](#) to detect whether food products have been modified or adulterated with fillers like vegetable oil.
- Research from Zahid Tarar, assistant professor of clinical medicine, [has established a link](#) between irritable bowel syndrome and mental health challenges.
- Yaw Adu-Gyamfi, assistant professor of civil and environmental engineering, developed [a new alert system](#) that tells drivers when they're in danger of colliding with a mobile work zone vehicle.
- Associate Professor Crystal Lim, chair of the Health Psychology Department, [offers recommendations](#) for childhood obesity prevention programs.
- Ann C. Peng, associate professor of management and Raymond W. Lansford Distinguished Professor of Leadership, found that managers can [increase workplace effectiveness](#) by encouraging more employees to assume leadership roles.
- In a new study, Jeffrey Wood, assistant professor in the School of Natural Resources, discovered the "ecosystem wilting point," [a threshold that triggers drought response in forests](#).
- [More research news](#)

### Accolades

- David Grant, executive director of the MU Midwest BioAccelerator, [has been elected](#) to the rank of Senior Member in the National Academy of Inventors.
- The Weed Science Society of America honored Kevin Bradley, professor of plant science and technology; Haylee Schreier, senior research associate; and Mandy Bish, extension specialist; [for their outstanding work](#).
- Brayden Routh, a veterinary resident, [earned a \\$5,000 grant](#) from the American College of Veterinary Ophthalmologists Vision for Animals Foundation to fund her corneal fibrosis research.
- Missouri Orthopaedic Institute surgeon Brett Crist will receive the [2023 Berton Rahn AO Research Award](#) for his contributions to the field.
- [More accolades](#)

**Division of Research, Innovation & Impact**

310 Jesse Hall Columbia, MO 65211  
573-882-9500



### Quick Links

[Research Support](#)  
[Innovation & Entrepreneurship](#)  
[Industry Partnerships](#)  
[Cores & Centers](#)  
[Departments](#)

This email has been generated in accordance with the MU Mass Email Policy.