



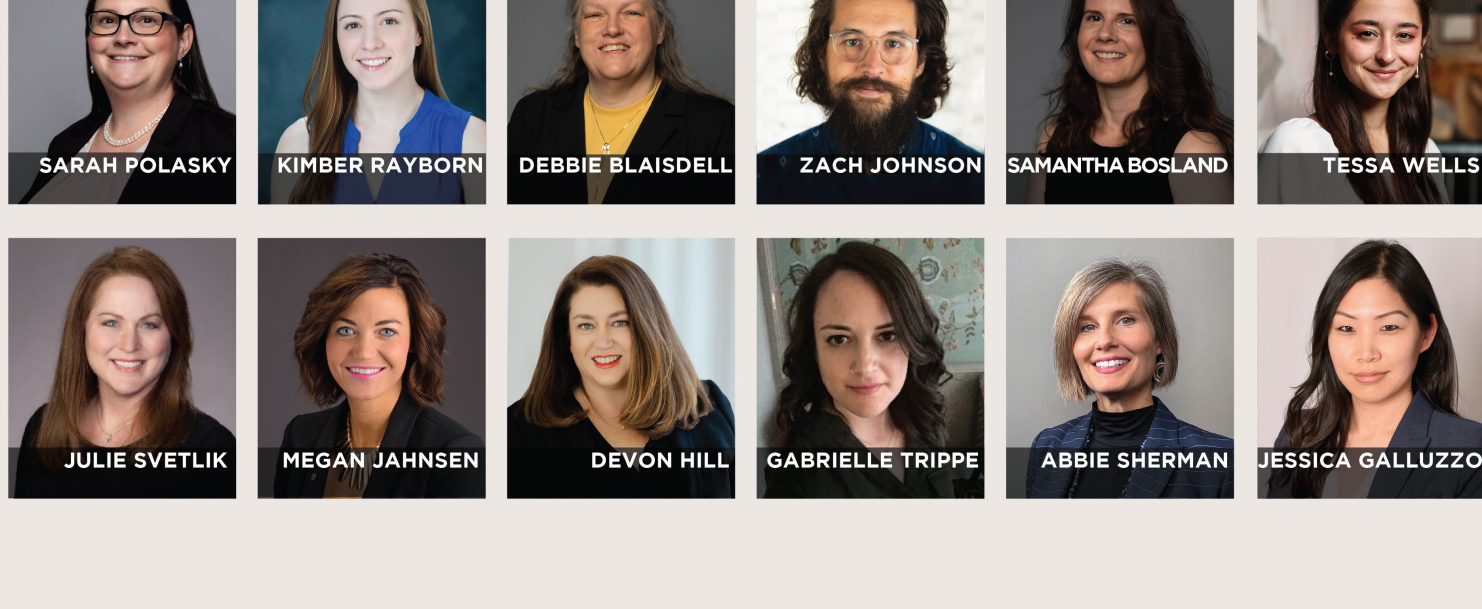
Research, Innovation & Impact

University of Missouri

February 2025

Click to view December research grants and contracts

STRATEGIC PROPOSAL DEVELOPMENT SERVICE



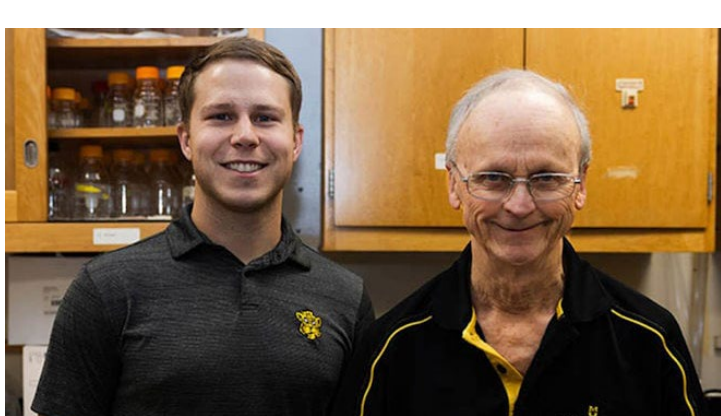
SPDS helps researchers focus on the science

Mizzou faculty share what it's like to work with the Division of Research Strategic Proposal Development Service (SPDS). In fiscal year 2024, the SPDS team helped faculty submit \$268 million in grant proposals. This work, in partnership with campus units, garnered \$122 million in awards. Learn more about how you can use SPDS to aid your work.



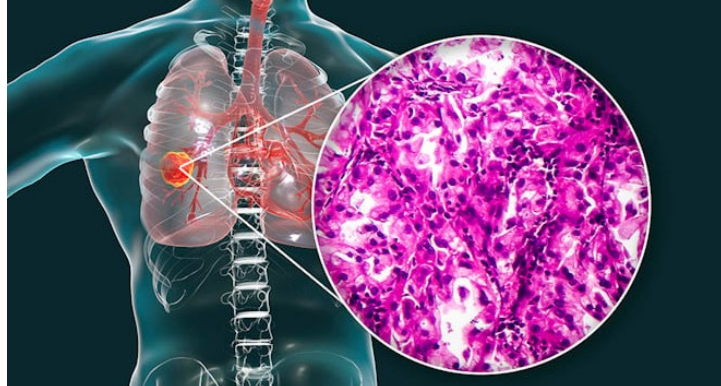
Communicating science to build trust

Libby Cowgill brought the Alan Alda Center for Communicating Science workshop to Mizzou with grant funding to help researchers improve their science communication skills through interactive exercises and storytelling techniques.



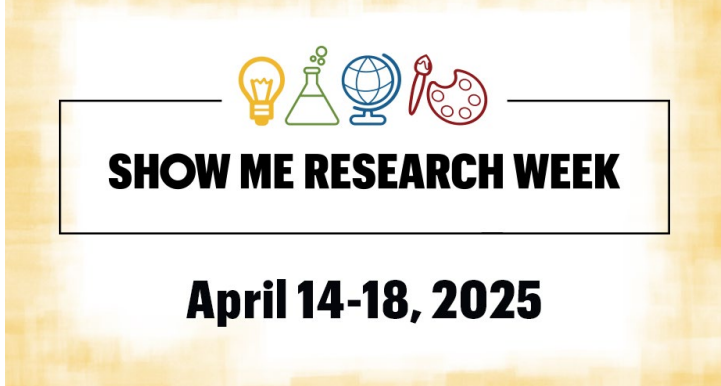
Inactive today, forgetful tomorrow

Postdoctoral fellow Nathan Kerr, left, and his mentor Professor Emeritus Frank Booth discovered a link between lack of activity and brain health. Their study showed muscle disuse led to changes in the brain linked to cognitive decline.



Treating difficult cancers

Non-small cell lung adenocarcinoma often develops resistance to first line treatment within 18 months. Brian Thomas, MD-PhD candidate, in the Don Burke lab at Bond Life Sciences Center published research in Nature's Precision Oncology that shows progress toward understanding what drives this cancer growth. They showed a potential treatment that slowed tumor growth in mice.



SHOW ME RESEARCH WEEK

April 14-18, 2025

Seeking presenters, judges

Celebrate research and creative achievements during Show Me Research Week, April 14-18.

- Students and postdocs can [register their oral presentations and research posters](#) until March 19.
- [Register to be a judge](#) by April 1.

Professional development



The Division of Research is postponing Accelerate Your Research Week due to the hold on key federal funding agencies. Thank you for understanding, and we look forward to hosting the event at a later date.

The Mizzou community can use the [LabArchives](#) electronic research notebook to share and capture research data. The platform also can be used to manage inventory, schedule equipment and more. [Register for a one-hour training session](#) Feb. 5, 17, 20, 25 or 26.

Feb. 10 (2 p.m.) – This month's HRPP/IRB research compliance seminar covers [legally effective informed consent](#) in research with human subjects. ([Request Zoom link](#))

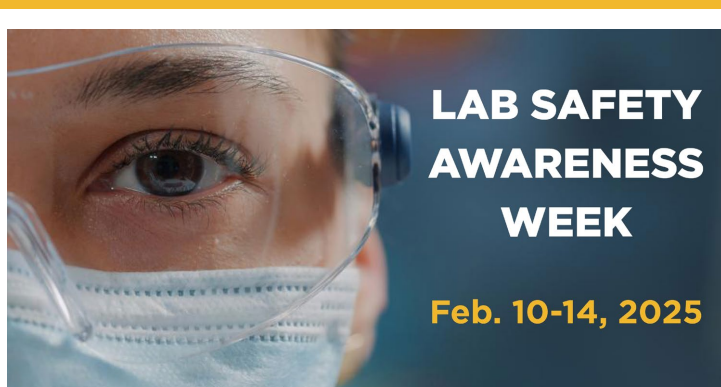
Feb. 13 (noon) – John Paul Christy, senior director of U.S. programs for the [American Council of Learned Societies](#), will speak about his organization's fellowships. ([Zoom link](#))

Feb. 28 (1 p.m.) – [Hiring Postdocs at Mizzou](#) will provide faculty with essential insights and guidelines for hiring postdoctoral researchers, including eligibility criteria, salary requirements, termination policies and more. ([Register](#))

From MU Libraries:

- **Feb. 10** (1 p.m.) – [Create map graphics on the All Things Missouri platform](#).
- **Feb. 11** (1 p.m.) – [See AI research tool demos and discuss ethical considerations](#).
- **Feb. 18** (1 p.m.) – [Maximize your research identity and measure research output](#).
- **Feb. 25** (1 p.m.) – [Use kepler.gl to create geospatial analytic visualizations](#).

Resources and fun



Foster a culture of safety

The Environmental Health and Safety team is hosting speakers, a photo contest, scavenger hunt and more during national Lab Safety Awareness Week, **Feb. 10-14**.

- Five [MU-branded lab safety posters](#) are available for download.

Don't miss these opportunities:

- [Division of IT trainings](#) for Microsoft Teams, OneDrive and other software
- [Grammarly for Education](#), AI writing assistance; campus licenses available
- [MU Libraries data services](#) to enhance your research visibility and reach
- Restored [Freedom Collection](#) of more than 2,000 science and health journals

Important dates

Deadlines

Institutional Biosafety Committee
Feb. 20: Submit research protocols for March 20 meeting.

Institutional Review Board (IRB)
Feb. 25: [Submit](#) human subjects research applications, amendments and annual updates for March 12 full board review.

Research Council Grants
March 31: Applications due by 5 p.m. [Email questions to Internal Funding staff](#).

National Endowment for the Humanities
April 9: [Fellowship applications](#) due.

American Association for the Advancement of Science (AAAS)
April 16: [Fellow nominations](#) due.

Events

Extra Credit film series
Feb. 10 (6 p.m.) – "A Dry White Season" and researcher panel discussion

NextGen Precision Health Discovery Series
Feb. 20 (noon) – [How We Build Drugs and Vaccines to Guard Against Viruses](#), featuring Anthony Griffiths, director of MU's Laboratory for Infectious Disease Research

Saturday Morning Science
Feb. 22 (10 a.m.) – Earthquakes and Earth's tectonic plates, Bond Life Sciences Center

Grant Connections meeting
Feb. 26 (10 a.m.) – Pre- and post-award grant management to make life easier ([Zoom link](#))

Things to know



Join campus AI group

Investigators interested in joining the new artificial intelligence research interest group (RIG) should [contact Clinton Davis-Stober](#). Don't forget to add other campus RIGs to the Division of Research website by [completing a brief form](#).



Undergraduate research has new home

The Office of Undergraduate Research has moved to Room 110, Student Success Center after 20 years in Bond Life Sciences Center. Faculty are welcome to stop by for mentorship and grant proposal consultations.



Bust myths, find mentors

Get the scoop on global and national awards and access resources from the provost's external awards team to help you take advantage of prestigious opportunities, such as the AAAS Fellows program.



Call for science visuals

Bond LSC invites Mizzou investigators and students to submit vibrant research images such as micrographs, gel images and data visualizations for possible installation in its "Joy of Discovery" sculpture. Submissions are due by April 2; eight images will be chosen by April 30.

Division of Research, Innovation & Impact
310 Jesse Hall, Columbia, MO 65211
573-882-9500

Quick Links
[Research Support](#)
[Innovation & Entrepreneurship](#)
[Industry Partnerships](#)
[Cores & Centers](#)
[Departments](#)

