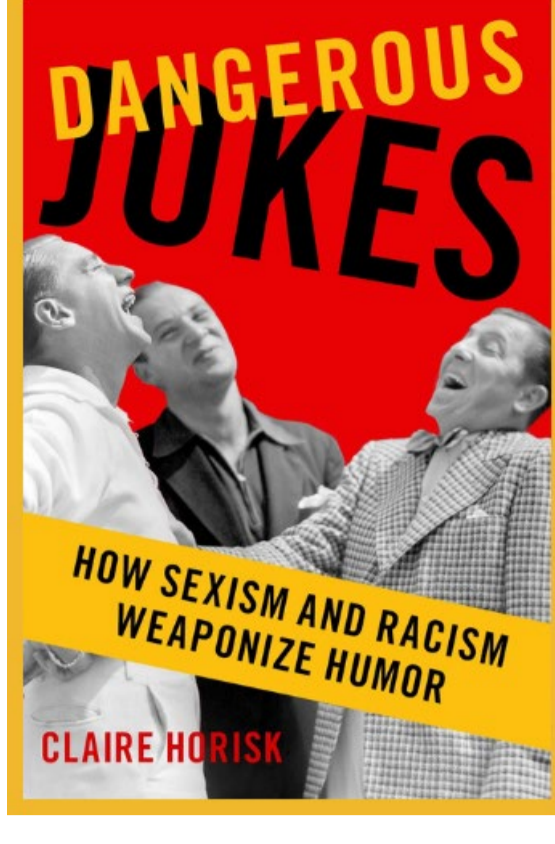




# Research, Innovation & Impact

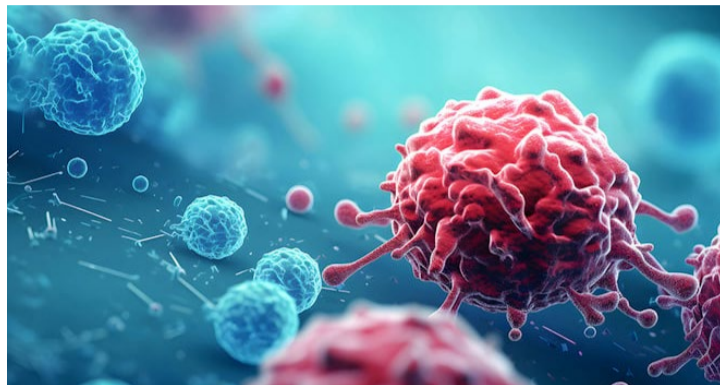
## University of Missouri

February 2024



### More than just a joke

In her first book, Claire Horisk, associate professor of philosophy in MU's College of Arts and Science, explores how jokes can help spread prejudice. Her philosophy of language research expands our understanding of the effects of demeaning and antagonistic speech.



### Revealing cancer

Bond LSC's Paul de Figueiredo collaborated with researchers in Japan to develop a novel method for boosting the immune system's capability to detect and eliminate cancer cells. Their study was published in Proceedings of the National Academy of Sciences.



### View December awards

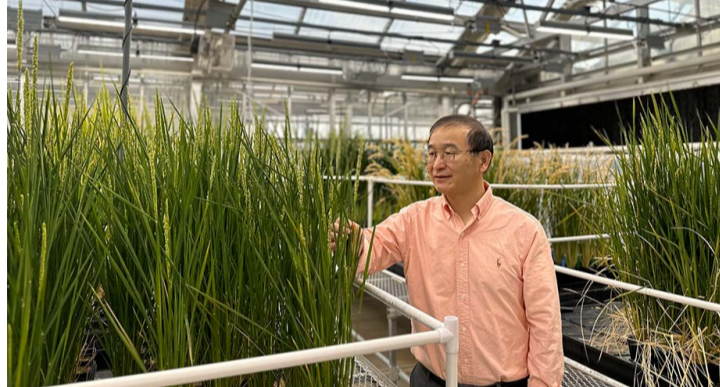
Investigators won federal, state, industry and foundation grants and awards at the end of 2023 in the arts, humanities, medicine, psychology, astronomy, agriculture, engineering, education and other areas.



### Participate in study

The Division of Research is conducting a study to better understand the research development experiences and needs of early career faculty. We are seeking pre-tenure faculty on the tenure track at MU to participate in a 3-4 minute intake survey and one 60-90 minute interview with an optional follow-up 30-minute interview. [Learn more about the study and sign up to participate.](#)

## Core knowledge



### Promoting plant power

For more than two decades, MU's Plant Transformation Advanced Technology Core has helped scientists conduct basic and applied research to improve crop yields, resistance to disease, stress tolerance and more.

## Professional development

**Feb. 9, 10 a.m.** (Room 2206 A&B, MU Student Center) – [Complete Your SciENcv Materials](#) submission for the National Science Foundation. ([Register](#))

**Feb. 14, noon** (virtual) – [Tracking Your Grant Budget](#) will include a template and insights on how to manage your project budget and pull data from PeopleSoft. ([Register](#))

**Feb. 15, 4:30 p.m.** (Atkins Family Seminar Room, NextGen building or virtual) – [Growing Team Science at Mizzou](#) is the focus of this seminar hosted by NextGen Precision Health and Ellis Fischel Cancer Center. ([Register](#))

**March 20, noon** (virtual) – The [Foundation Funding 101](#) workshop will feature information about private foundations and services offered by MU's Foundation Relations team. ([Register](#))

## Resources and opportunities



### Seeking presenters, judges

Celebrate research and creative achievements during this campuswide event.

- [Students and postdocs can register](#) their oral presentations and research posters until noon **March 13.**

- [Volunteer to be a judge.](#)

### Up your grants game

Seats are still available for Sponsored Programs Administration classes that provide specialized grants training via Zoom from 8:30–10:30 a.m. Login with your MU credentials to [access class descriptions and register.](#)

- Proposal Development and Submissions, **Feb. 29**
- PeopleSoft Grants Module and the Electronic Proposal Signature Routing Sheet (ePSRS), **March 14**
- Budget Development, **April 4**
- Facilities and Administrative (F&A) Rate, **April 18**
- Notice of Grant Award (NGA) Acceptance and Establishment of an Award, **May 2**

### NIH training program teaches new skills

Researchers, health care professionals, graduate students and postdocs learn how to bring new medical products into clinical practice in the NIH-funded Biomedical Entrepreneurship Training Program for Aging. The one-year program includes minicourses, mentoring and a \$6,000 fellowship. [Apply by March 30.](#)

### Interpret newspaper content

The MU Libraries are creating a list of faculty and graduate students interested in analyzing historical newspaper content from the New York Times, Wall Street Journal, Washington Post, Los Angeles Times, Chicago Tribune, Chicago Defender and St. Louis Post-Dispatch using the [TDM Studio](#) text and data mining platform from ProQuest. [Contact Jeannette Pierce for access.](#)

Check out [research support resources](#) and [workshops](#) from MU Libraries.

## Important Dates

### Deadlines

**Limited Submissions Funding**  
Feb. 8: [CDC Public Health Epidemiology, Prevention and Control of Influenza and Other Respiratory Pathogens in China](#)

Feb. 19: [NSF Centers for Innovation and Community Engagement in Solid Earth Geohazards](#)

**Young Scientist Fair and Expo, March 9**  
Feb. 10: [Reserve booth space](#) to share hands-on STEM activities with families.

**Institutional Biosafety Committee (IBC)**  
Feb. 21: Submit research protocols for March 21 meeting.

**Institutional Review Board (IRB)**  
Feb. 25: [Submit](#) human subject research applications, amendments and annual updates for March 13 full board review.

**Research Council Grants**  
March 12: Applications due by 5 p.m. [Email questions to Internal Funding staff.](#)

### Events

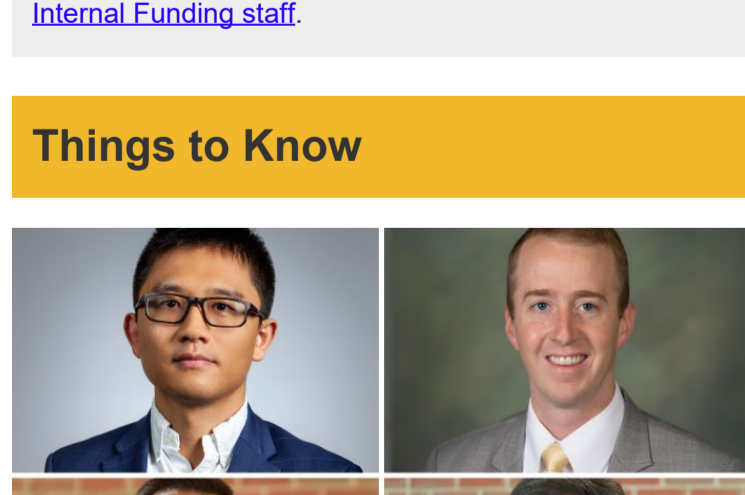
**HRPP/IRB Research Compliance Webinar**  
Feb. 12, 2 p.m. (virtual) – MU IRB Reliance Requests and Collaborative Exempt Studies ([Request Zoom link](#))

**NextGen Precision Health Discovery Series**  
Feb. 14, noon (Atkins Family Seminar Room, NextGen building or virtual) – Improving Improvement: Generalizable Lessons of Improvement From Surgery ([Register](#))

**Chancellor's Art Showcase**  
Feb. 23, 6-9 p.m. (Missouri Theatre) – MU's biggest night of student artwork, performance and design ([Register](#))

**Grant Connections meeting**  
Feb. 28, 10 a.m. (virtual) – All About Grant Transfers: Transfers Coming in, Transfers Going out ([Zoom link](#))

## Things to Know



### Business faculty offer marketing insights

Julien Bei, Brady Hodges, Niket Jindal and Khimendra Singh, assistant professors in the Trulaske College of Business, have new research on brand performance, effective slogans, marketing techniques that help struggling firms and the influence of lobbying on product recalls in the auto industry.

[More research news](#)



### Speeding and scaling translational research

MU is one of only 18 U.S. institutions to receive an NSF Accelerating Research Translation award. Principal investigator Sheila Grant, professor in the College of Engineering, will use the \$5.5 million award to establish a Technology, Entrepreneurship and Commercialization Hub for researchers.

[More accolades](#)

### Division of Research, Innovation & Impact

310 Jesse Hall, Columbia, MO 65211  
573-882-9500

### Quick Links

[Research Support](#)  
[Innovation & Entrepreneurship](#)  
[Industry Partnerships](#)  
[Cores & Centers](#)  
[Departments](#)

