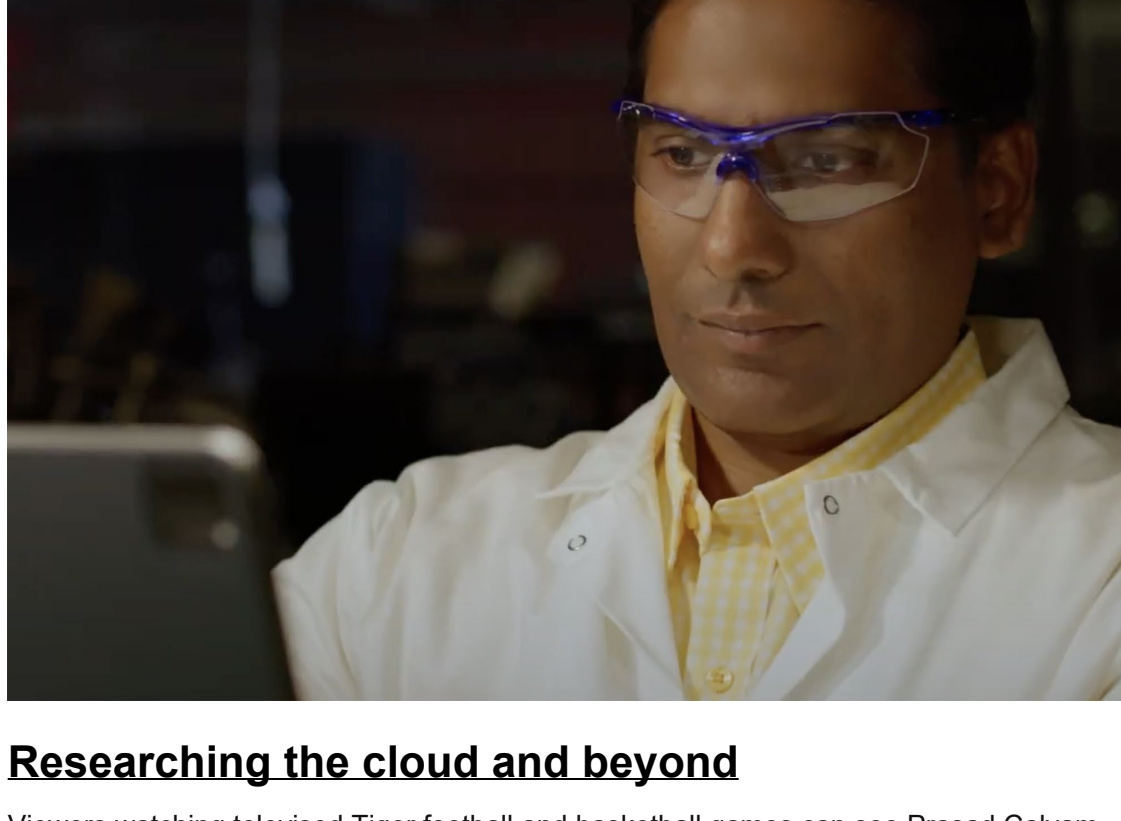




Research, Innovation & Impact

University of Missouri

February 2023



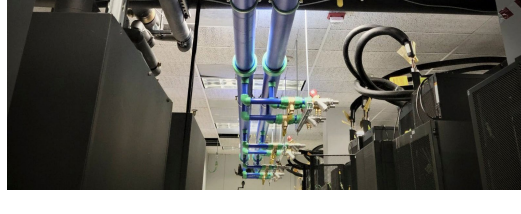
Researching the cloud and beyond

Viewers watching televised Tiger football and basketball games can see Prasad Calyam, Greg G. Gilliom Professor of Cyber Security, in Mizzou's current commercial. Learn more about him in this Q&A and view the TV spot.



AAAS Fellows named

The American Association for the Advancement of Science named five MU professors as 2022 Fellows for their distinguished efforts in advancing various fields of science.

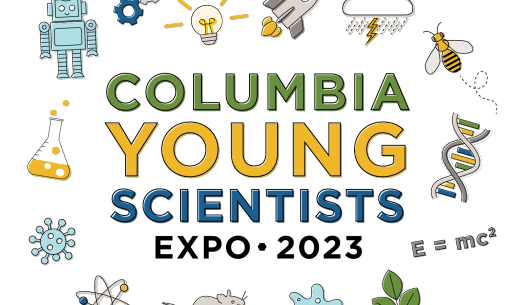


Cooling our jets

Researchers will be able to transfer and store data faster thanks to a collaborative project from the IT Research Support Solutions team that uses liquid cooling to advance high-power computer capabilities.

Share your expertise

The Connector is recruiting researchers to share hands-on activities and act as judges at the March 11 Columbia Young Scientists Fair and Expo. This event connects families with science, technology and MU research. Questions? [Email Christal Huber](#).



SHOW ME RESEARCH WEEK

April 17-21, 2023

Seeking judges and student presenters

Celebrate the achievements of students and postdocs during this campuswide event. Students [should register to present](#) their research by **March 22**. Organizers also are seeking [judges](#) and [mentors](#).

Division Resources



Access more study populations

The Division of Research is offering new tools to help researchers recruit volunteers for their studies. Learn more about a database of MU research studies available to the public and the national recruitment service ResearchMatch.

Requesting confidentiality agreements

Investigators should request a nondisclosure, material transfer or data use agreement from the Sponsored Programs Administration *before* sharing confidential or unpublished research with an outside collaborator.

Office hours set for proposal illustrator

Need help with your grant proposal graphics or figures? Want to learn more about [Strategic Proposal Development Service](#) (SPDS) design services? Office hours with the SPDS illustrator are scheduled from 12-1 p.m. CST on the second Friday of each month. [Drop in via Teams](#) or reach out to [Samantha Peters](#) for more information.

Core Knowledge



Demystifying proteins

The Gehrke Proteomics Center, one of 16 advanced technology core facilities at MU, is helping researchers understand the vital role of proteins in living organisms.

Professional Development

From Mizzou:

- *Maximizing Your Research Identity and Impact*, Feb. 7, 12:30-1:30 p.m. (virtual) – Learn how to use researcher profiles and scholarly communication networks to develop and manage your online presence. Use ORCID, Google Scholar Profile, MOspace, h-index, impact factors and more to maximize your professional impact. ([Register](#))
- *Translational Advances in Neurodegenerative Diseases*, Feb. 15, 3-4 p.m. (virtual) – Curators' Distinguished Professor Chris Lorson will discuss early-stage development of reagents for drug discovery, his biotech startup, collaborations and more. ([Register](#))
- *Involving Undergraduate Students in Research*, Feb. 21, 9:30-10:30 a.m. (virtual) – Join Linda Blockus, director, Office of Undergraduate Research, and a faculty panel to learn about potential funding mechanisms and strategies for recruiting, managing and mentoring undergraduates. ([Register](#))
- *Introduction to National Institutes of Health (NIH) Funding*, March 16, 12-1 p.m. (virtual) – Christie Terry and Amanda Carr from the Division of Research will cover how the NIH is organized, the role of the program officer, how to identify funding opportunities and offer tips for developing successful NIH applications. ([Register](#))
- *Introduction to National Science Foundation (NSF) Funding*, March 22, 12-1 p.m. (virtual) – Christie Terry and Amanda Carr from the Division of Research will cover how the NSF is organized, the role of the program officer, how to identify funding opportunities and offer tips for developing successful NSF applications. ([Register](#))

External opportunity:

- NSF and the Swiss National Science Foundation are allowing researchers from the U.S. and Switzerland to [submit collaborative grant proposals](#).

Important Dates

Deadlines

- Institutional BioSafety Committee (IBC)**
Feb. 16: Submit research protocols for March 16 meeting.
- Institutional Review Board (IRB)**
Feb. 25: [Submit](#) human subject research applications, amendments and annual updates for March 8 full board review.
- Limited Submissions Funding**
Feb. 27: [Empowering Marginalized Racial and Ethnic Communities in Europe](#)
March 6: [CDC State Public Health Approaches to Addressing Arthritis](#)
- Research Council Grants**
March 13: Applications are due by 5 p.m., notification of awards by May 2. Questions? [Email Internal Funding staff](#).

Events

- HRPP/IRB Research Compliance Seminar**
Feb. 13, 2 p.m. ([Request Zoom link](#)) – Interactions With Sponsored Programs: Spotlight on IRB Approval
- Extra Credit film series**
Feb. 13, 6 p.m., Ragtag Cinema – Watch "Love & Basketball" and enjoy a panel discussion with MU researchers.
- NextGen Precision Health**
Feb. 14, 12-1 p.m., NextGen Precision Health building or virtual – [Reverse Zoonosis](#) of SARS-CoV-2 ([Register](#))
- Chancellor's Arts Showcase**
Feb. 24, 6:30-9 p.m., Missouri Theatre – Enjoy student art and live performances.

Things to Know

Around campus

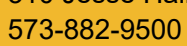
- Brian Houston, director of the MU Disaster and Community Crisis Center, and his team say residents of the New Madrid Seismic Zone should [get ready for the next earthquake](#).
- Keith Herman, Curators' Distinguished Professor of educational, school and counseling psychology, is using a \$2 million Department of Justice grant to help rural [Missouri schools detect threats](#) to school safety.
- *Findings from a recent study*, by Emma Teixeira, associate professor of molecular microbiology and immunology, and her team may help the development of vaccines or immunotherapies for cancer and inflammatory diseases.
- Mahmoud Almasri, associate professor of electrical engineering and computer science, and his team received a \$750,000 NSF award to [develop new technologies](#) to quickly detect foodborne pathogens.
- Matthew Glendening and Ken Shaw, professors of accounting, found that when businesses submit misleading financial statements, [it can be an early warning sign](#) of a looming recession.
- [More research news](#)

Accolades

- Andrew Kiselica, assistant professor in the Department of Health Psychology, is [one of two new recipients](#) of the IMPACT Career Development Award program from the National Institute on Aging.
- The Modern Language Association of America [honored Megan Moore](#), chair of the School of Languages, Literatures and Cultures, for her most recent publication.
- Five MU doctoral and postdoctoral fellows prepared for faculty careers by participating in the [Southeastern Conference Emerging Scholars Program](#).
- College of Veterinary Medicine postdoc Nishant Sinha received an [International Society for Eye Research travel award](#).
- [More accolades](#)

Division of Research, Innovation & Impact

310 Jesse Hall Columbia, MO 65211
573-882-9500



Quick Links

[Research Support](#)
[Innovation & Entrepreneurship](#)
[Industry Partnerships](#)
[Cores & Centers](#)
[Departments](#)