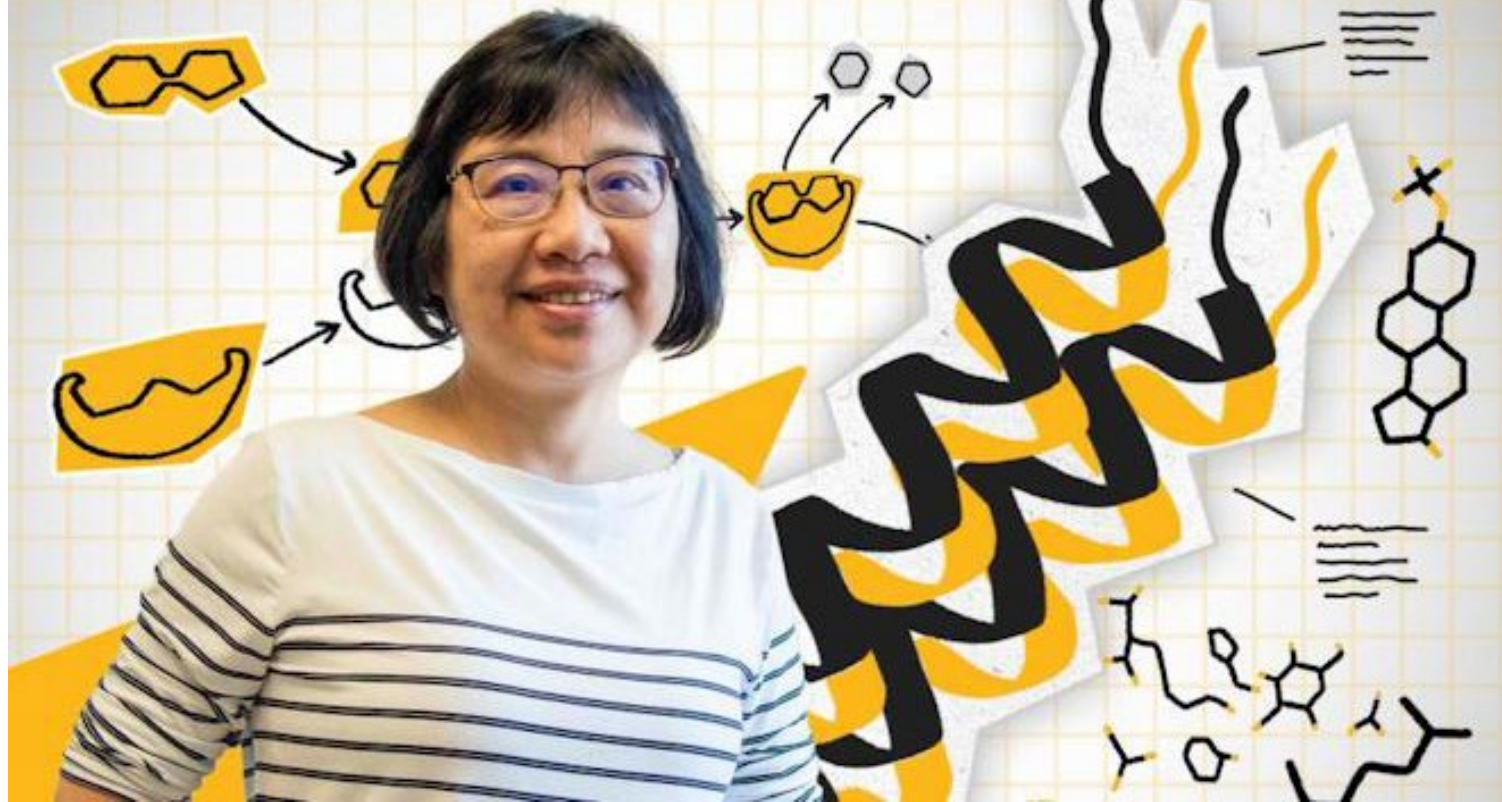


BRIGHT IDEAS

Insights & opportunities from Mizzou Research

Vol. 8, No. 5 — December 2025

[View grants and contracts awarded in October.](#)



Dalton Cardiovascular scientist explores fundamental protein interactions in pursuit of molecular medicine

Xiaoqin Zou studies how deep pockets in proteins make it possible for other proteins or small molecules to latch onto them. [Read how she and collaborators across the country have garnered more than \\$7 million in direct NIH grants](#) since 2023 to work toward novel, molecular medicine.



Importance of federally funded research

Mizzou continues to receive positive national attention for research success in an evolving higher education landscape. [Access links to some of the latest coverage in President Mun Choi's Nov. 19 blog.](#)



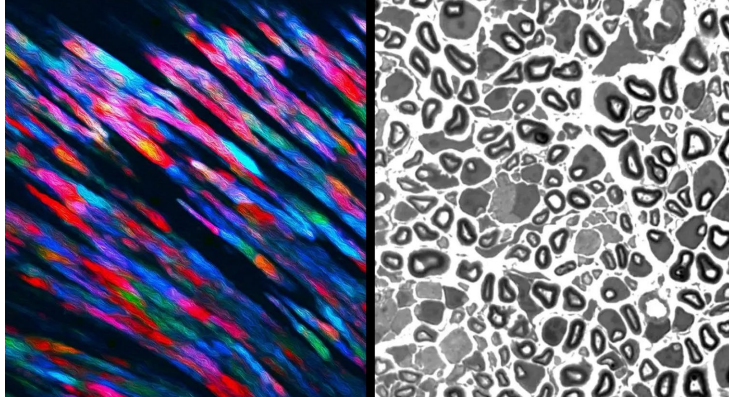
A quest with many guides

[Four Mizzou student teams won a combined \\$37,000 in funding for their businesses](#) last month after participating in Entrepreneur Quest, a signature program of the Griggs Innovators Nexus in the Division of Research.



Strengthening lab safety one bottle at a time

Improper storage of chemicals is a common issue Environmental Health & Safety encounters when inspecting campus labs. [Learn five easy steps you can take](#) to minimize the risk of chemical leaks, spills and reactions.



Decorative data

Two Science2Art images created by Mizzou students sold last month during the annual BioNexus KC meeting. [Learn about the research behind the artwork](#) and what inspired these students to participate in the event.

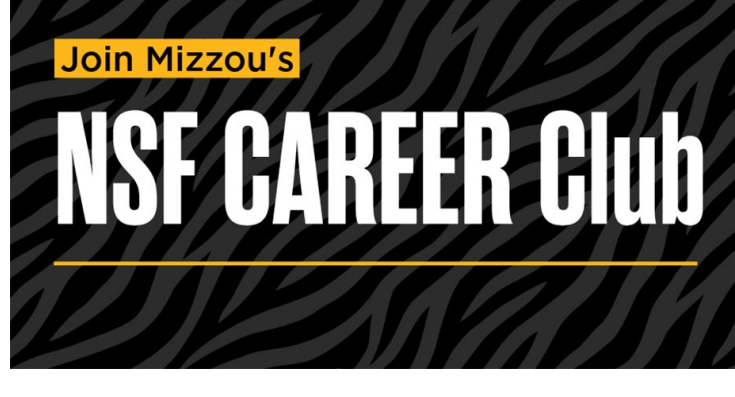
Policy changes affecting researchers



[All faculty and staff must submit requests for international travel authorization through eCompliance](#), a requirement that went into effect **Dec. 1**. This includes travel conducted on behalf of Mizzou as well as personal travel if you bring university property with you or access university systems.

Starting **Dec. 22**, the purchase and operation of drones manufactured or assembled by certain foreign entities will be prohibited in some federally funded university contracts. [Get details and see federally cleared drone manufacturers.](#)

Opportunities and resources



Early career researchers in [Mizzou's CAREER Club](#) plan for, submit or resubmit competitive applications to the National Science Foundation (NSF) CAREER Program. Participants receive training, support and consultation from first draft to submission. [Apply by Dec. 19.](#)



[Submit poster abstracts by Dec. 19](#) for the NextGen Pathways Symposium hosted at Missouri S&T **March 12-13**. Faculty, staff, clinicians, postdocs and students doing health-related research can register to attend this annual event starting **Jan. 5**.



The Division of Research and Environmental Health & Safety created flyers that promote basic safety measures for campus labs. We hope you [download and print the ones most suitable for your lab](#) and post them in highly visible areas, such as near entrances and exits.



Our advanced technology core facilities offer a world of resources for research projects of all kinds. [Download this flyer](#) for quick access to contact information at your desk.

Members of the American Society of Plant Biologists (ASPB)

[Nominate a fellow ASPB member](#) between **Dec. 15** and **Feb. 13** for prestigious ASPB awards that recognize service to the society and long-term plant biology contributions. Contact the [External Awards team](#) in the Office of the Provost for more information.

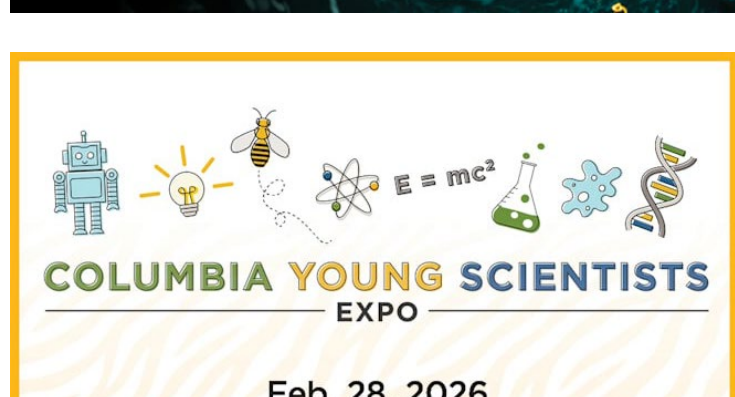
Apply for NCFDD scholarships

The Provost's Office is accepting scholarship applications for the NCFDD [Faculty Success Program](#), which runs virtually from **May 18** to **July 26**. Participants develop skills to increase research and writing productivity while maintaining a work-life balance. [Apply by March 2.](#)

Mark your calendar



[Make the most of your microscopy images at a two-day, hands-on workshop Jan. 13-14](#). Participants in this beginner-friendly course hosted by the Advanced Light Microscopy core will gain practical experience in image processing, segmentation and quantitative analysis using Fiji/ImageJ.



Share your research through hands-on STEM activities with youth and families at the [Columbia Young Scientists Fair and Expo Feb. 28](#).

- [Reserve booth space](#) by **Feb. 6**.
- [Email Christal Huber](#) with questions.

Laboratory Safety Awareness Week, Feb. 9-13

Environmental Health & Safety is hosting interactive demos, expert talks, workshops, games, prizes and more during national [Lab Safety Awareness Week](#). More details coming soon.

Deadlines

Institutional Biosafety Committee
Dec. 15: [Submit](#) research protocols for Jan. 15 meeting.

Institutional Review Board (IRB)
Dec. 25: [Submit](#) human subjects research applications, amendments and annual updates for Jan. 14 full board review.

Mizzou Libraries undergrad research contest
Jan. 31: Encourage undergraduates to submit a research project or creative work to Mizzou Libraries for a chance to win a scholarship.

Events

HRPP/IRB research compliance seminar
Dec. 8 (2 p.m.) – “IRB Review Complete, Now What?” ([Request Zoom link](#))

Extra Credit film series
Dec. 8 (6 p.m.) – “Home Alone” and researcher panel discussion

NextGen Precision Health Discovery Series
Jan. 27 (noon) – “[Targeting Age-Related Metabolic Dysfunction to Extend Healthspan](#)”



Research, Innovation & Impact
University of Missouri



Bright Ideas
Division of Research, Innovation and Impact
310 Jesse Hall, Columbia, MO 65211
573-882-9500
[research.missouri.edu](#)